



GERANIUM SHAWL

Anne Jones

Designed with a speckled fingering-weight cashmere-merino yarn, the **Geranium Shawl** is worked in one piece from the center neck down and outward to the points. Lace triangles and textured triangles create a meticulously symmetrical geometric fabric, and double moss stitch borders the shorter sides.

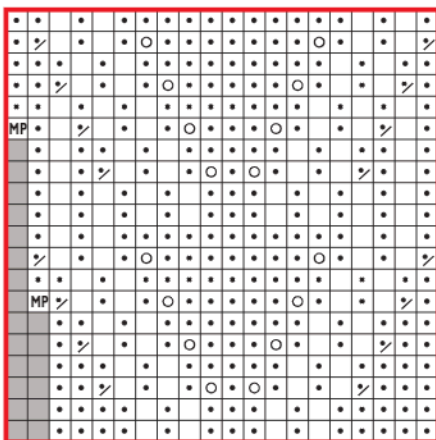
YARN The Plucky Knitter Bello Fingering

PATTERN PAGE 29





LACE



18-st to 20-st rep



GERANIUM SHAWL

ANNE JONES

Difficulty Level ○○○○

Yarn Weight ①

Finished Size 68" wide and 31" tall at center.

Yarn The Plucky Knitter Bello Fingering (55% merino wool, 45% cashmere; 380 yd [347 m]/3½ oz [100 g]): fantoosh, 3 skeins.

Needles Size 5 (3.75 mm): 32" circular (cir). Adjust needle size if necessary to obtain the correct gauge.

Notions Markers (m); tapestry needle.

Gauge 19 sts and 33 rows = 4" in lace patt.

For techniques you don't know, please visit our online knitting glossary at www.interweave.com/interweave-knitting-glossary.

NOTES

- This shawl is worked back and forth in rows from the center neck down and outward to the points. A circular needle is used to accommodate the large number of stitches.

SHAWL

Garner tab: CO 3 sts. Work 8 rows in garter st; do not turn after last row. Rotate work and pick up and knit 3 sts along selvedge edge, then rotate work and pick up and knit 3 sts along CO edge—9 sts total. Turn. **Next row** (WS) K3, place marker (pm), [p1, pm] 3 times, k3. **Next row** (RS) K3, sl m, yo, k1, yo, sl m, k1, sl m, yo, k1, yo, sl m, k3—13 sts. **Next row** (WS) K3, sl m, purl to m, sl m, p1, sl m, purl to m, sl m, k3. **Next row** (RS) K3, sl m, yo, knit to m, yo, sl m, k1, sl m, yo, knit to m, yo, sl m, k3—17 sts. **Next row** (WS) K3, sl m, purl to m, sl m, p1, sl m, purl to m, sl m, k3. **Next row**

13, 17, 17, 23, 23) rnds. **Divide for body and sleeves:** Next rnd K44 (47, 50, 55, 60, 65, 70), place next 61 (63, 65, 71, 76, 82, 88) sts on holder for right sleeve, using the backward-loop method CO 9 (9, 10, 10, 11, 12, 13) sts, pm, CO 9 (9, 10, 10, 11, 12, 13) sts, k87 (94, 100, 110, 120, 130, 140), place next 61 (63, 65, 71, 76, 82, 88) sts on holder for left sleeve, CO 18 (18, 20, 20, 22, 24, 26) sts, knit to end, remove m, knit to m (new beg of rnd)—210 (224, 240, 260, 284, 308, 332) sts rem for body.

BODY

Work even in St st until piece measures 12" from underarm. Purl 1 rnd. Knit 1 rnd. Purl 1 rnd. **Next rnd** *K2tog, yo; rep from * to end. Purl 1 rnd. Knit 1 rnd. Purl 1 rnd. Work even in St st until piece measures 13" from underarm. Change to smaller 24" needle. Work in k1, p1 rib for 13 rnds. Using the tubular method (see Stitch Guide), BO all sts.

SLEEVES

With larger dpn and RS facing, beg at center of underarm, pick up and knit 9 (9, 10, 10, 11, 12, 13) sts, k61 (63, 65, 71, 76, 82, 88) held sleeve sts, pick up and knit 9 (9, 10, 10, 11, 12, 13) sts—79 (81, 85, 91, 98, 106, 114) sts total. Pm and join in the rnd. Work even in St st until piece measures 6¾ (7, 7, 8, 8, 8)" from underarm.

Sizes 36½ (39, 41¾, 45¼)" only:

Dec rnd K2tog, knit to end—78 (80, 84, 90) sts rem.

All sizes:

Purl 1 rnd. Knit 1 rnd. Purl 1 rnd. **Next rnd** *K2tog, yo; rep from * to end. Purl 1 rnd. Knit 1 rnd. Purl 1 rnd. Work even in St st until piece measures 8 (8½, 8½, 8½, 9½, 9½, 9½)" from underarm.

Sizes 36½ (39, 41¾, 45¼, 49½, 53½)" only:

Dec rnd K1 (2, 1, 1, 1, 1), [k2tog, k2] 5 (5, 9, 3, 4, 2) times, [k2tog, k3 (3, 1, 1, 1, 1)] 7 (7, 3, 21, 21, 29) times, [k2tog, k2] 5 (5, 9, 3, 4, 2) times, k2tog, k0 (1, 0, 0, 0, 0)—60 (62, 62, 62, 68, 72) sts rem.

Size 57¾" only:

Dec rnd K1, [k2tog] 3 times, [k2tog, k1] 33 times, [k2tog] 4 times—74 sts rem.

All sizes:

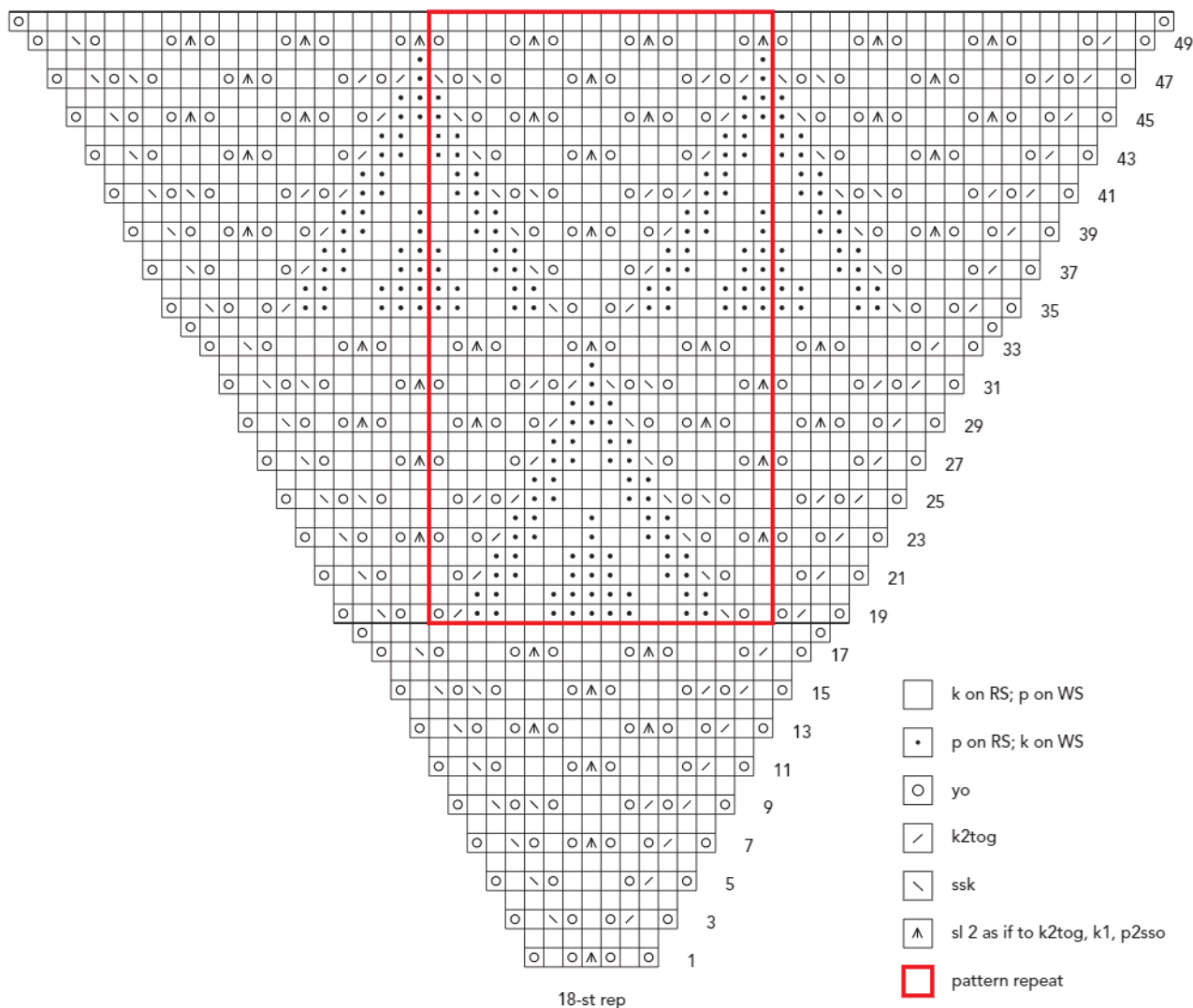
Change to smaller dpn. Work in k1, p1 rib for 9 rnds. Using the tubular method, BO all sts.

FINISHING

Weave in ends. Block to measurements.

After a career in management, IRINA ANIKEEVA has taken up her needles full time to pursue a long-standing love of knitwear design. She and her husband live in Southern California. See her passion for cable (and all other) knitting on her website, www.irmiandesign.com, and find her on Ravelry as hibis411.

LACE



(RS) K3, sl m, work Lace chart to m, sl m, k1, sl m, work Lace chart to m, sl m, k3—4 sts inc'd. Cont in patt through Row 50 of chart, then work Rows 19–50 three times, then work Rows 19–34 once more—381 sts. **Border:**

Row 1 (RS) K3, sl m, yo, purl to m, yo, sl m, p1, sl m, yo, purl to m, yo, sl m, k3—4 sts inc'd.

Row 2 (WS) Knit.

Row 3 K3, sl m, yo, *k2tog, yo; rep from * to 1 st before m, k1, yo, sl m, k1, sl m, yo, **k2tog, yo; rep from ** to 1 st before m, k1, yo, sl m, k3—4 sts inc'd.

Row 4 K3, purl to last 3 sts, k3.

Row 5 K3, sl m, yo, purl to m, yo, sl m,

p1, sl m, yo, purl to m, yo, sl m, k3—4 sts inc'd.

Row 6 Knit.

Row 7 K3, sl m, yo, *k1, p1; rep from * to 1 st before m, k1, yo, sl m, k1, sl m, yo, **k1, p1; rep from ** to 1 st before m, k1, yo, sl m, k3—4 sts inc'd.

Row 8 K3, sl m, *k1, p1; rep from * to 1 st before m, k1, sl m, p1, sl m, **k1, p1; rep from ** to 1 st before m, k1, sl m, k3.

Rep last 2 rows 5 more times—417 sts.

Work Rows 1–5 once more—429 sts.

With WS facing, BO all sts kwise.

FINISHING

Weave in ends. Block.

Many moons ago, the only resources for knitters were the quarterly knitting publications found in local yarn stores. Like clockwork, ANNE JONES would run every four months to grab the latest copy of *Interweave Knits* and ogle the stunning designs, dog-earring her favorites. Each edition would steal her into its visual story and spur her to create the challenging designs. She still has all her old copies of *Interweave Knits*, and being included in this phenomenal publication is a dream come true. Check out her other designs on Ravelry as AnneJonesDesigns.

Copyright of Interweave Knits is the property of F + W Media and its content may not be copied or emailed to multiple sites or posted to a listserv without the copyright holder's express written permission. However, users may print, download, or email articles for individual use.