

WINTER BERRIES

Anne Baker's cosy edge-to-edge jacket in tuck and slip stitch will keep out the winter chill

MEASUREMENTS

To fit bust 92-97 [102-107, 112-117] cm, 36-38 [40-42, 44-46] in. Actual size 103.5 [113.5, 123.5] cm, 40¾ [44¾, 48¾] in. Length to shoulder excluding welt 49 cm, 19½ in. Sleeve seam excluding cuff 27.25 cm, 10¾ in.

Instructions are written for first size, larger sizes follow in brackets. If only one figure is given, it applies to all sizes.

TENSION

12 stitches and 30 rows to 10 cm, 4 in measured over tuck and slip stitch pattern (tension dial setting around 9).

For perfect results, please check your tension carefully.

PATTERN RATING



Fairly easy for knitters with some experience.

MACHINES

This pattern is suitable for Brother chunky punchcard machines with a ribber.

MATERIALS

James C Brett Chunky Marble
(Available from Uppingham Yarns)

4 [4, 5] x 200 g balls in Main Yarn (MY).

ABBREVIATIONS

For a list of abbreviations we use, please turn to page 62.

NOTES

We used knit side of knitting as right side of garment. Before knitting, prepare any punchcards needed from charts provided or use Card 1 from basic pack. Note that punchcard patterns as shown, may have to be repeated until card is a suitable length for knitting. Punchcards require two rows of holes punched to start and finish of card for joining.

BACK

Push 64 [70, 76] Ns on each bed at centre of machine to WP for full N rib. * With carriage at right and using MT-8/MT-8 and MY, cast on. Attach comb. K 3 tubular rows. Carriage is at right. Set carriage for full N rib knitting, K 1 row. Attach weights. Using MT-1/MT-1, K 8 rows. Carriage is at left. Transfer sts to main bed. Insert card and lock on first row. K 1 row selecting Ns if required. Carriage is at right. Release card. Set machine to elongate pattern. Push in right tuck button and right slip button together. Set RC at 000 *. Using MT, K 74 rows. **Shape armholes** Cast off 4 sts at beg of next 2 rows. K 1 row. Dec 1 st at each end of next row and foll 4 alt rows. 46 [52, 58] sts. RC shows 86. Place marker at each edge. K 60 rows. RC shows 146. Set carriage

to hold. Using a length of MY, cast off centre 18 sts. Push 14 [17, 20] Ns at left to HP. Using WY, K a few rows in st st over rem 14 [17, 20] sts and release from machine. Push 14 [17, 20] Ns at left from HP to UWP. Using WY, K a few rows and release from machine.

RIGHT FRONT

Push 23 [26, 29] Ns on each bed at right of centre 0 to WP for full N rib. Work as for Back from * to *. Using MT, K 74 rows.

Shape armhole Cast off 4 sts at beg of next row. K 2 rows. Dec 1 st at armhole edge of next row and foll 4 alt rows. 14 [17, 20] sts. RC shows 86. Place marker at right edge. K 60 rows. RC shows 146. Using WY, K a few rows in st st and release from machine.

LEFT FRONT

Push 23 [26, 29] Ns on each bed at left of centre 0 to WP for full N rib. Work as for Back from * to *. Using MT, K 75 rows.

Shape armhole Cast off 4 sts at beg of next row. K 1 row. Dec 1 st at armhole edge of next row and foll 4 alt rows. 14 [17, 20] sts. RC shows 86. Place a marker at left edge. K 60 rows. RC shows 146. Using WY, K a few rows in st st and release from machine.

SLEEVES

Push 54 Ns at centre of machine to WP. Using MT and WY, cast on and »





K a few rows ending with carriage at left. Insert card and lock on first row. Using MT and MY, K 1 row selecting Ns if required. Carriage is at right. Release card. Set machine to elongate pattern. Push in right tuck button and right slip button together. Set RC at 000. K 8 rows. Shape sides by inc 1 st at each end of next row and every foll 8th row until there are 70 sts. K 17 rows. RC shows 82.
Shape top Cast off 4 sts at beg of next 2 rows. K 1 row. Dec 1 st at each end of next row and foll 4 alt rows. 52 sts. RC shows 94. Using WY, K a few rows in st st and release from machine.

CUFFS

With carriage at right and using MY, cast on 51 sts in 1x1 rib. Attach comb. K 3 tubular rows. Carriage is at right. Set carriage for 1x1 rib knitting, K 1 row. Attach weights. Using MT-2/MT-2, K 11 rows. Using MT-3/MT-3, K 11 rows. Using MT-4/MT-4, K 24 rows. Using MT-3/MT-3, K 11 rows. Using MT-2/MT-2, K 11 rows. Carriage is at left. Transfer sts to main bed. Using MT, K 1 row. With P side facing, pick up 54 sts from lower edge of sleeve and place onto Ns dec 3 sts evenly. Using MT+1, K 1 row. Cast off loosely behind sinker pegs.

FRONT BANDS

With carriage at right and using MY, cast on 37 sts in 1x1 rib. Attach comb. K 3 tubular rows. Carriage is at right. Set carriage for 1x1 rib knitting, K 1 row. Attach weights. Using MT-4/MT-4, K 128 rows. Using WY, K a few rows and release from machine.

JOIN RIGHT SHOULDER

Push 14 [17, 20] Ns to WP. With K side of right back shoulder facing, replace 14 [17, 20] sts onto Ns. With P side of right front shoulder facing, replace 14 [17, 20] sts onto same Ns. Unravel WY. Cast off loosely behind sinker pegs.

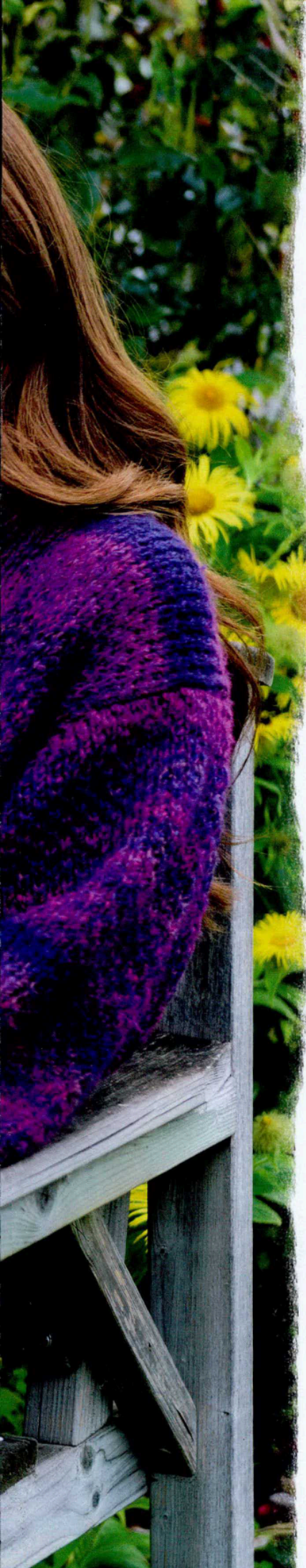
JOIN LEFT SHOULDER.

Work as for right shoulder reading left for right.

JOIN SLEEVES TO ARMHOLES

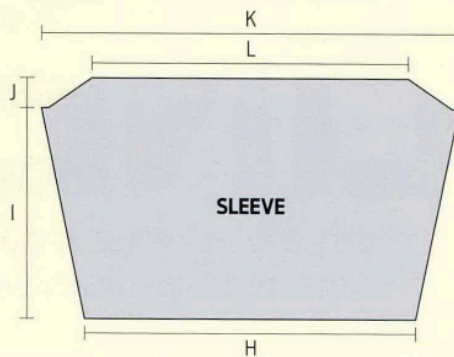
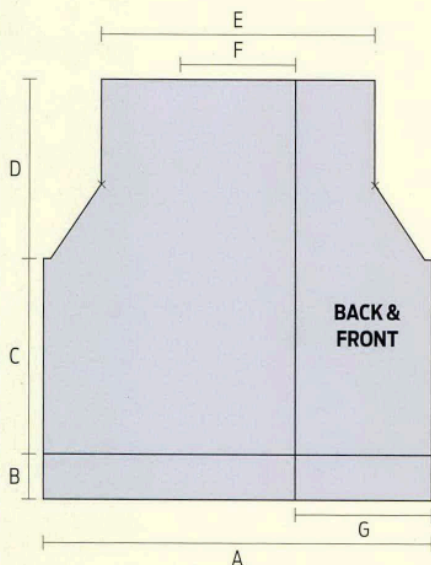
Push 52 Ns at centre of machine



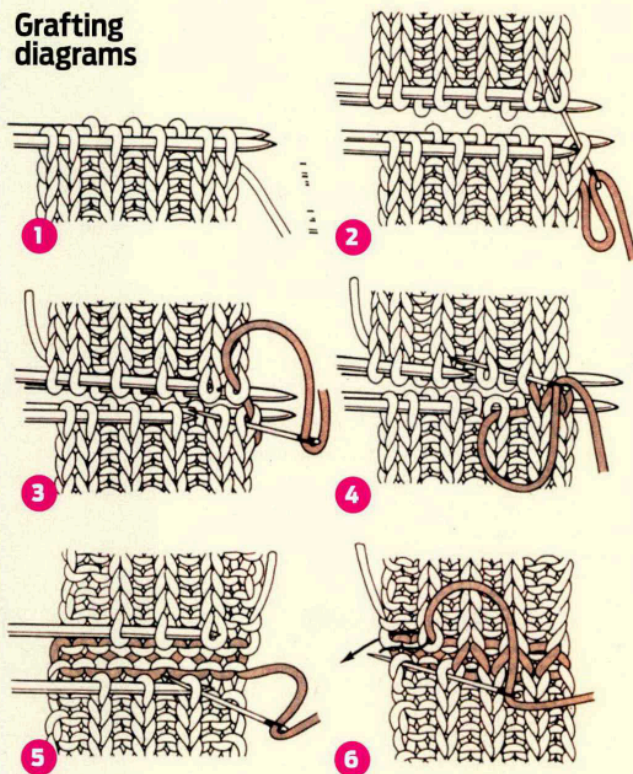


DIAGRAMS

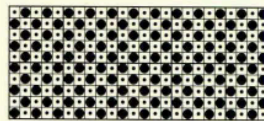
A = 53.25 [58.25, 63.25] cm G = 19 [21.5, 24] cm
 B = 5 cm H = 45 cm
 C = 25 cm I = 27.25 cm
 D = 24 cm J = 4 cm
 E = 38.25 [43.25, 48.25] cm K = 58.25 cm
 F = 15 cm L = 43.25 cm



Grafting diagrams



Card 1



Use
Card 1
 from your
 basic pack,
 or punch
 the simple
 pattern

to WP. With K side facing, pick up 52 sts along armhole edge between markers and place onto Ns with shoulder seam at centre 0. With P side facing, replace 52 sts at top of Sleeve onto same Ns. Unravel WY. Using MT+1 and MY, K 1 row. Cast off loosely behind sinker pegs.

MAKING UP

Mattress stitch armhole shaping on back and fronts to armhole shaping

on sleeves. Using mattress stitch, join side and sleeve seams. Mattress stitch cuffs, reversing seam for turn back of cuffs. Join centre back seam of bands, by grafting stitches together. Mattress stitch band to garment, placing centre back seam to centre back of neck. Fold band in half and slip stitch bottom of bands together. Catch stitch centre of back seam of band to garment. Cover with a wet cloth and leave to dry if required. ■

MACHINE
 KNITTING
 MONTHLY

LIVE!

Lots to see and try, lots to do and buy. Come and join us for our **SPRING SHOWS** in Bournemouth & Nottingham. Details on **page 49**

Copyright of Machine Knitting Monthly is the property of Machine Knitting Monthly and its content may not be copied or emailed to multiple sites or posted to a listserv without the copyright holder's express written permission. However, users may print, download, or email articles for individual use.